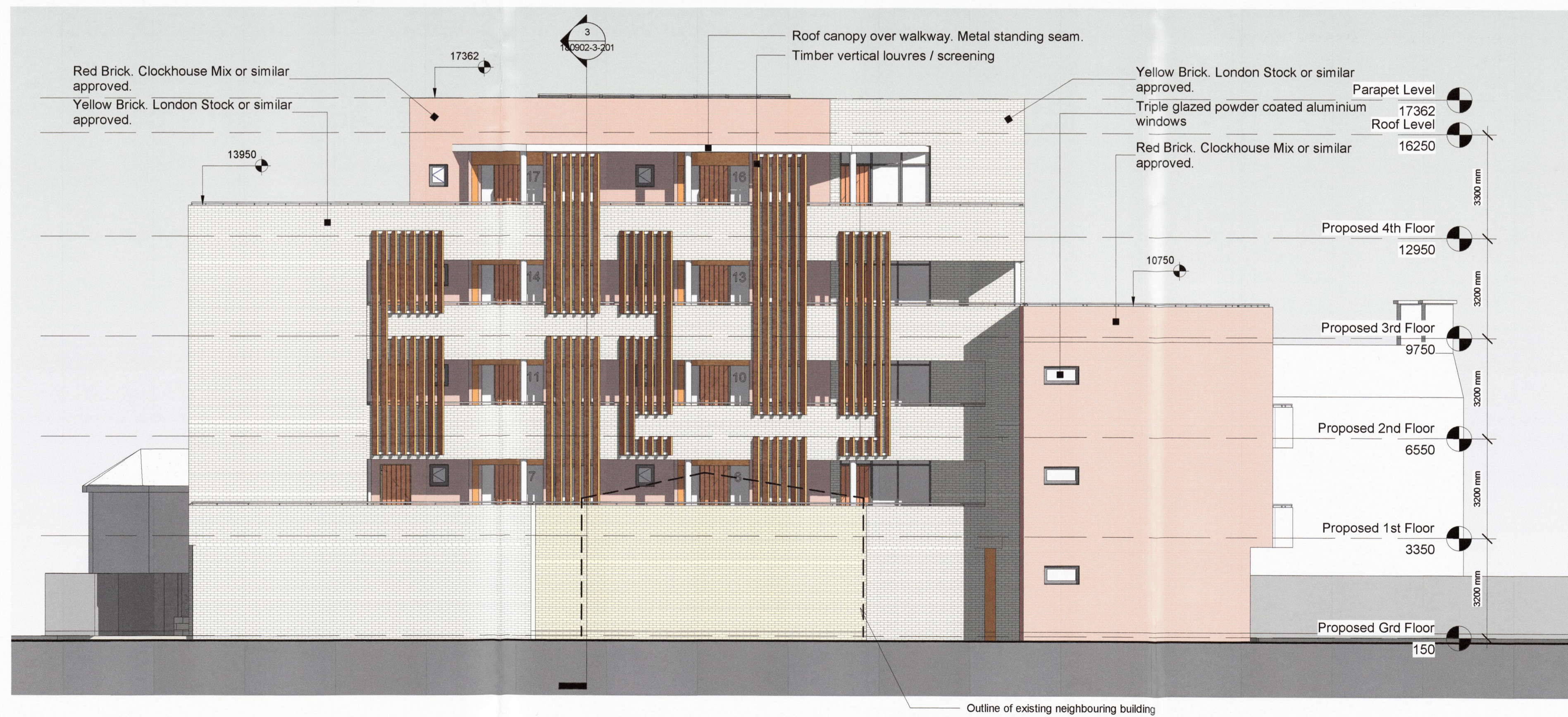




1 Proposed South Elevation
1 : 100



2 Proposed North Elevation
1 : 100

Rev.	Description	By	Date

VHA VINCENT HANNON ARCHITECTS Galway Office 2A Deepark Business Centre, Oranmore, Galway. P. 091-483934 E: info@vha.ie W: www.vha.ie	Client / job description: Wicklow County Council / Tuath Parnell Road, Bray, Apartments	
	drawing title: Proposed Elevations	
Project stage: Part 8 Planning	Drawing no: 180902-3-200	Scale: 1 : 100
Date: 16-5-2019	Drawn by: JC	Rev: P1
Checked by: JG		

